



CONDUCTING A CRIMINAL BACKGROUND CHECK IS A CRUCIAL PART IN ASSESSING THE RISK OF BRINGING THAT PERSON INTO YOUR ORGANIZATION.

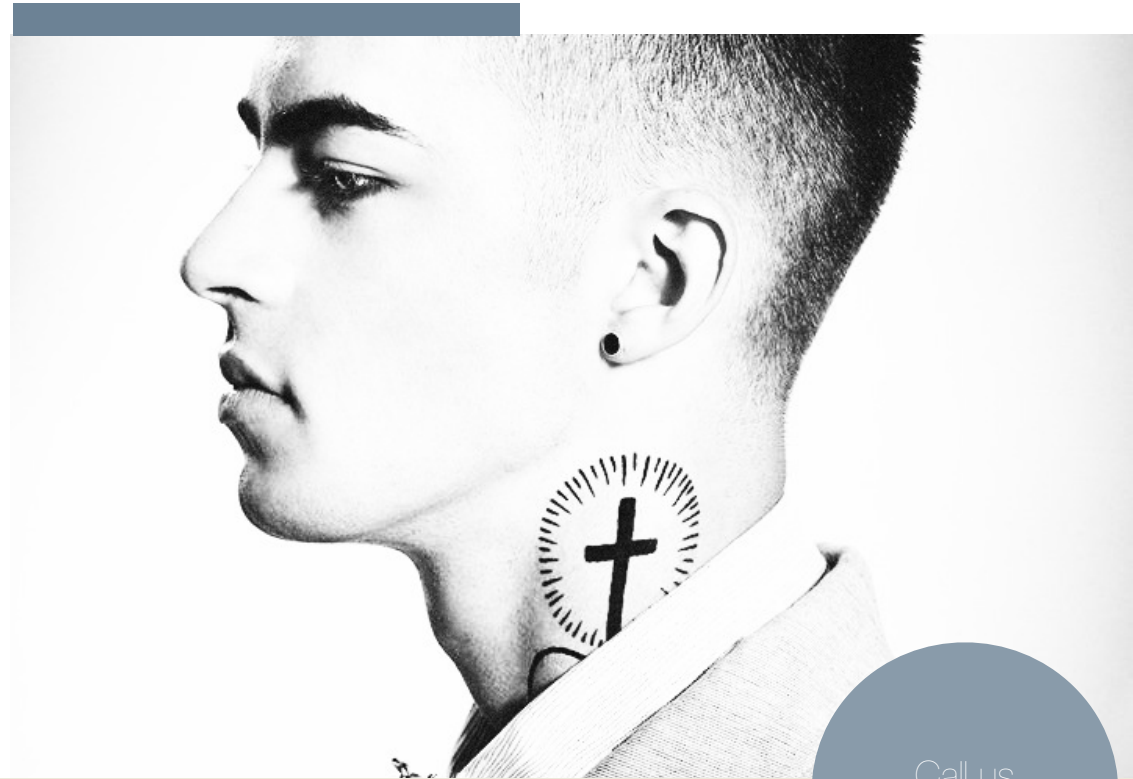
You can use the results of a criminal background check to assess the applicability of the record to the position's level of responsibility, exposure to assets or customers, and other criteria.

Our comprehensive pre-employment and post-hire criminal background checks are guaranteed to help you decrease corporate liabilities, reduce fraud, promote a drug-free environment and prevent violence and theft.

*"Finding and keeping the best person for the job is more than just an interview and a gut feeling."*



FISCHER & PARTNERS



Call us  
02-126-8166

#### Contact Us

Fischer & Partners Co.,Ltd.  
63 Athenee Tower 23rd Floor  
Wireless Road Lumpini Pathumwan  
Bangkok 10330

Tel : 02-126-8166  
[info@fischerandpartners.com](mailto:info@fischerandpartners.com)  
[www.fischerandpartners.com](http://www.fischerandpartners.com)

WHY CRIMINAL  
BACKGROUND  
CHECK

ONE BAD HIRING DECISION COULD END UP COSTING YOUR COMPANY A LOT OF MONEY IN TURNOVER COSTS OR NEGLIGENT HIRING CLAIMS.

**FISCHER & PARTNERS** CAN HELP YOU HIRE AND RETAIN THE RIGHT EMPLOYEES WITH AFFORDABLE, RISK MITIGATING, FRONT-END SOLUTIONS CUSTOMIZED FOR YOUR UNIQUE BUSINESS.

- ❑ Identifying potential risky hires
- ❑ Creating a safer and more secure environment
- ❑ Helping safeguard your organization's reputation
- ❑ Protecting organizational assets
- ❑ Fostering trust among current employees



1

CRIMINAL CHECK

THB 3,000



3

CRIMINAL CHECKS

THB 8,000



5

CRIMINAL CHECKS

THB 12,500



10

CRIMINAL CHECKS

THB 20,000

PACKAGES PRICE (THB)